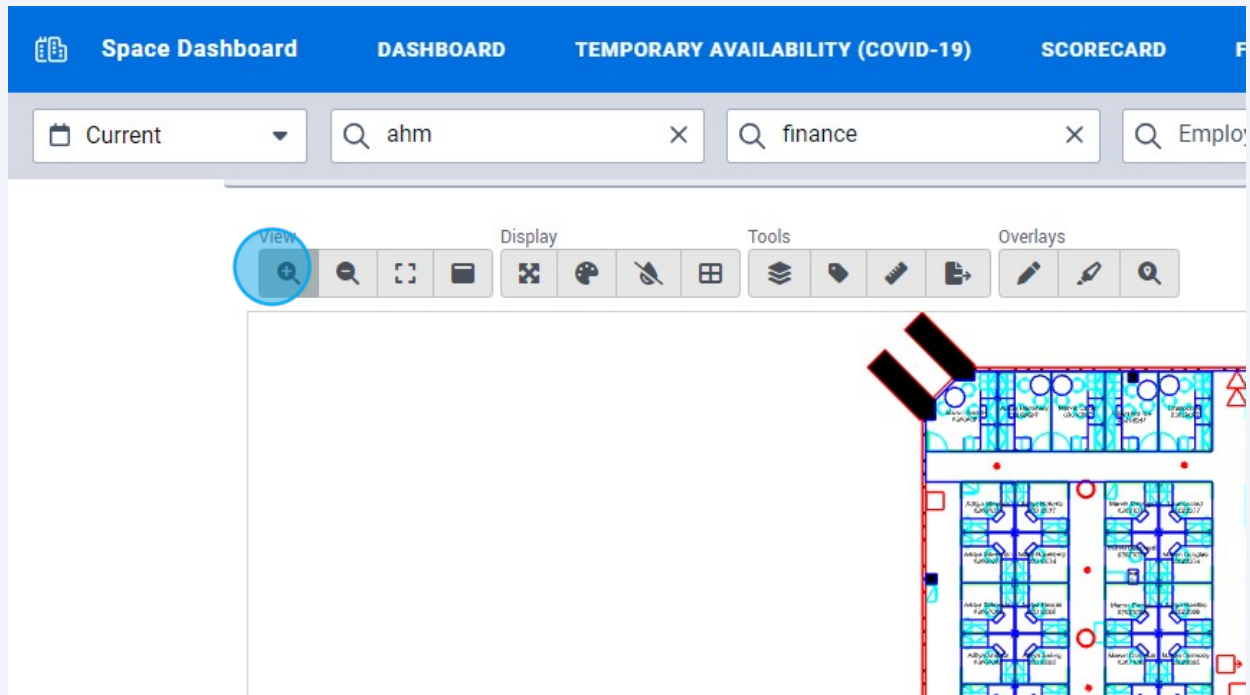
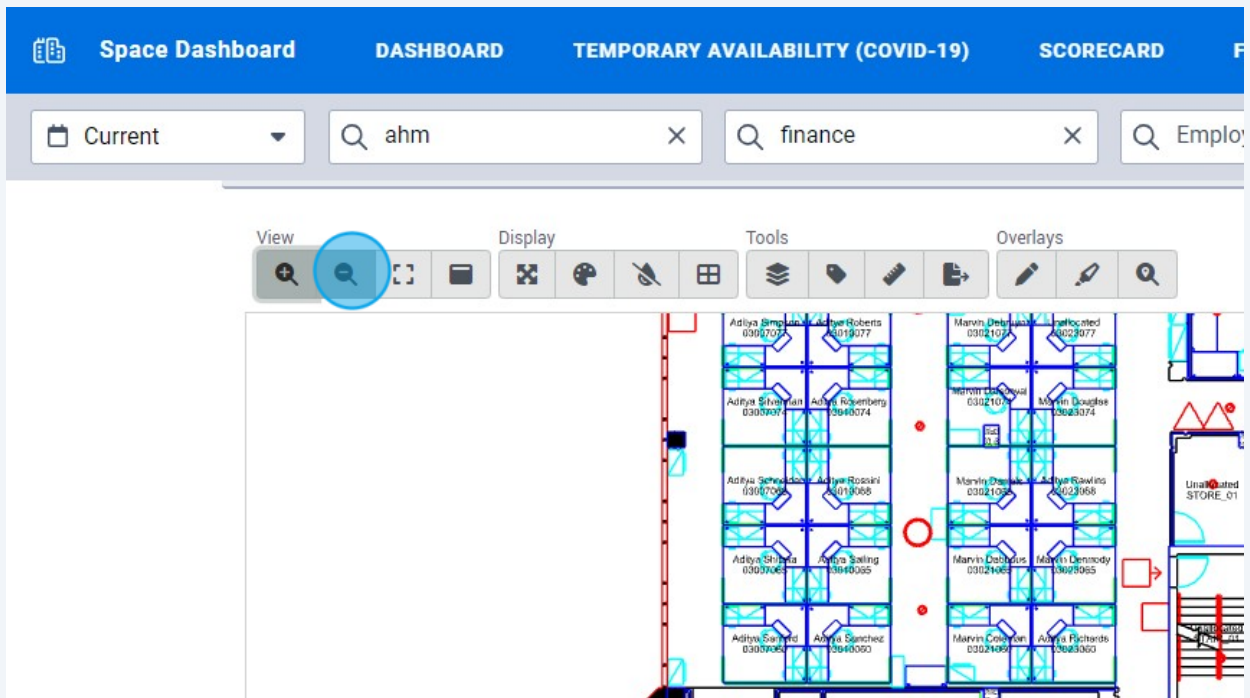


How To Use Space Dashboard Floor Viewer

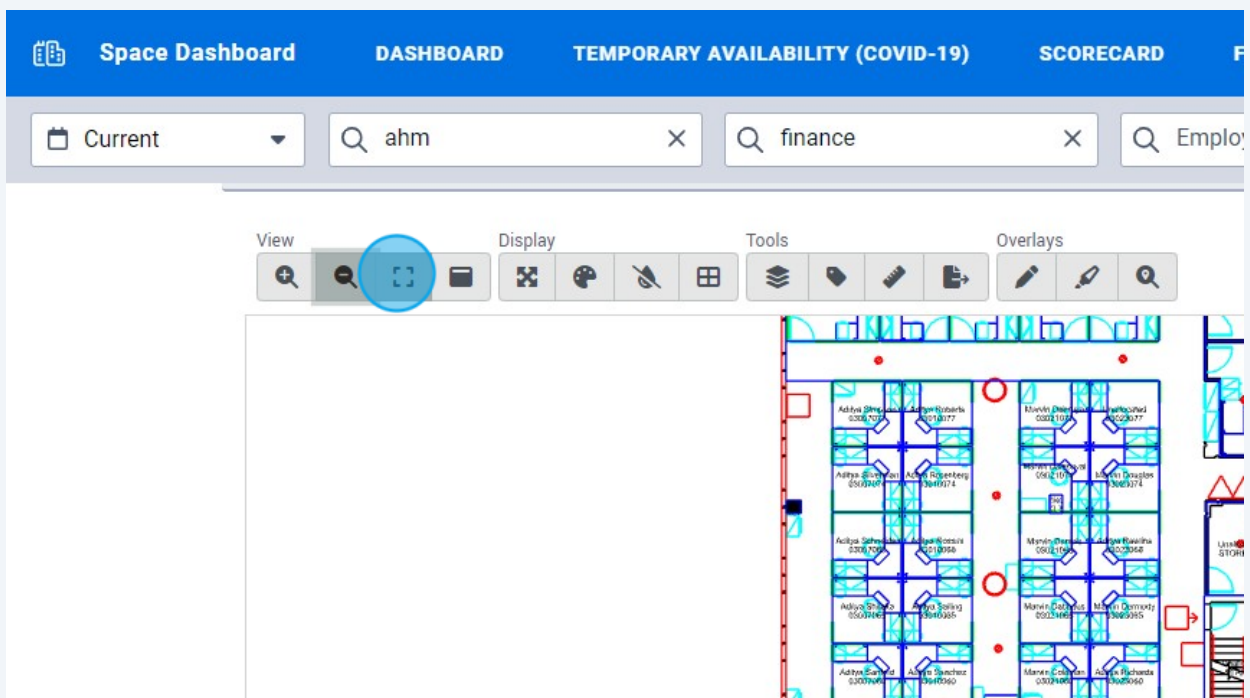
- 1 To zoom in, click "Zoom In". Alternatively, you can use your mouse scroll wheel.



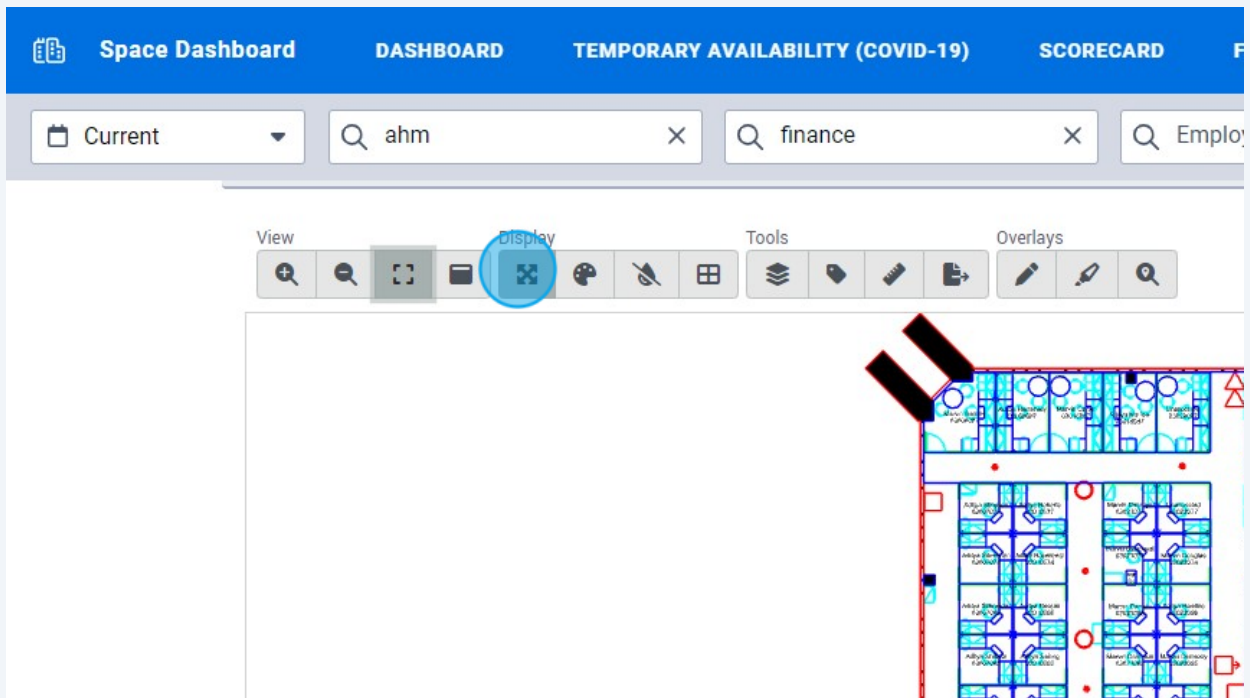
2 To zoom out, click "Zoom Out". Alternatively, you can use your mouse scroll wheel.



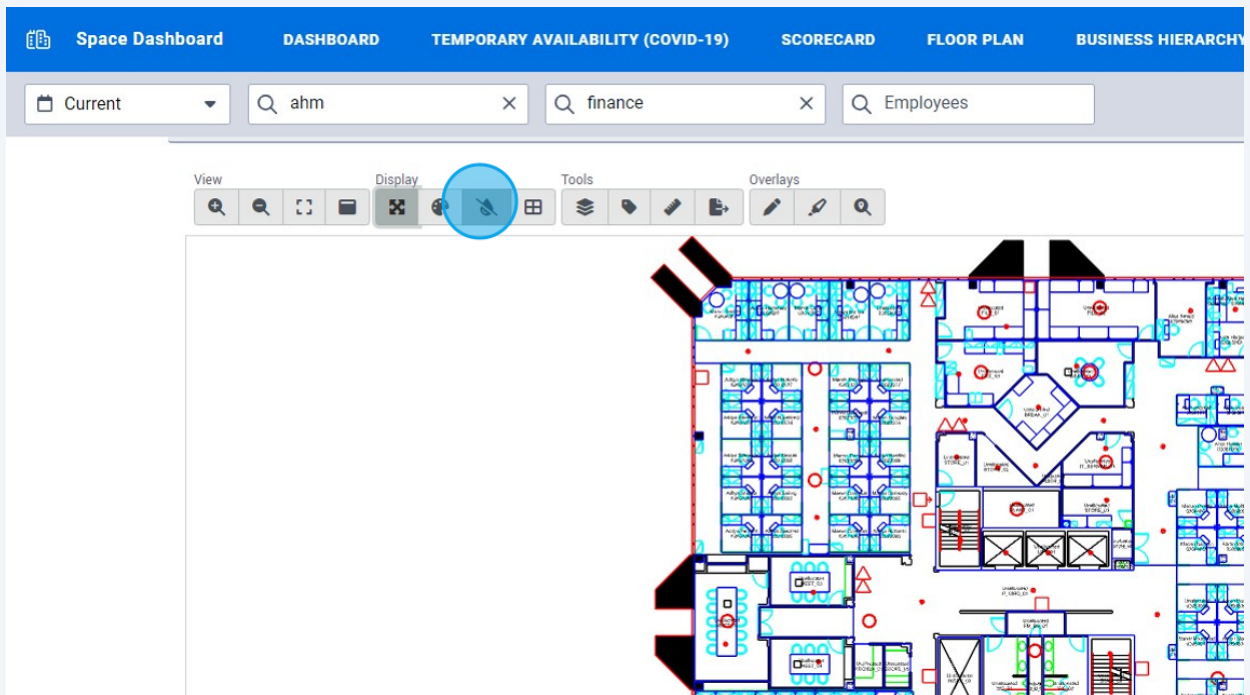
3 To view the entire floor plan, click "Zoom Extents".



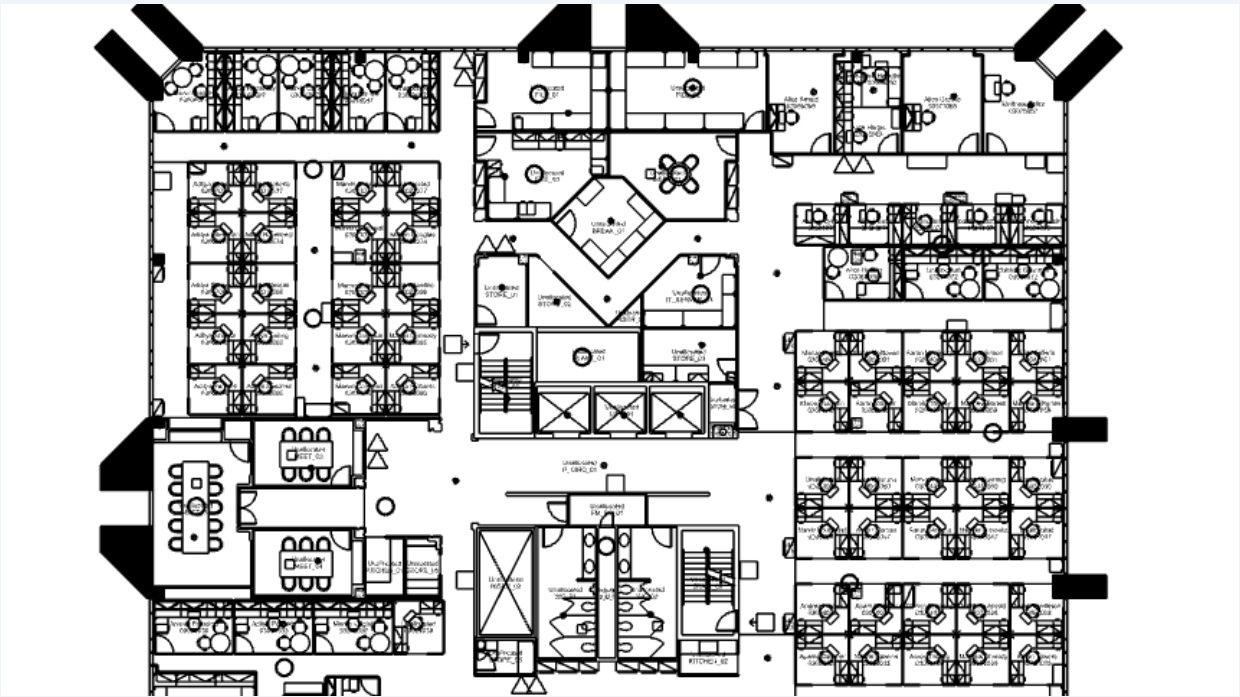
4 To make the floor plan full screen, click "Toggle Full Screen"



5 To change the drawing from colour to black and white, click "Toggle Monochrome"



6 This is the floor plan in black and white



7 To change the floor plan to a more simplistic view, click "Toggle Render Mode"

