



The Changing Workplace

WebCAD

ON-DEMAND CAD SOLUTION

# Contents

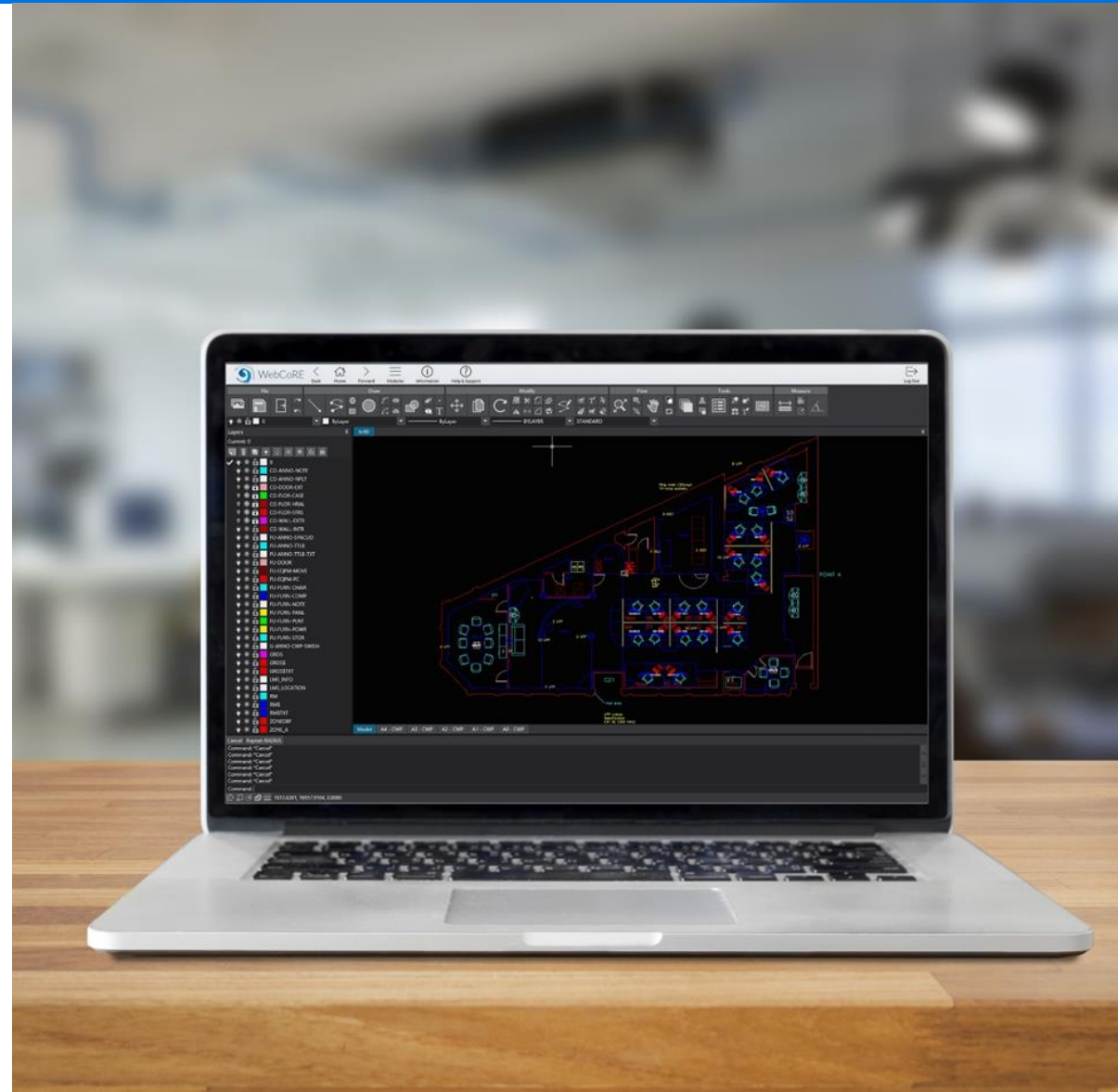
WebCAD

Features

Benefits

How WebCAD Contributes  
to the Ecosystem

About The Changing  
Workplace

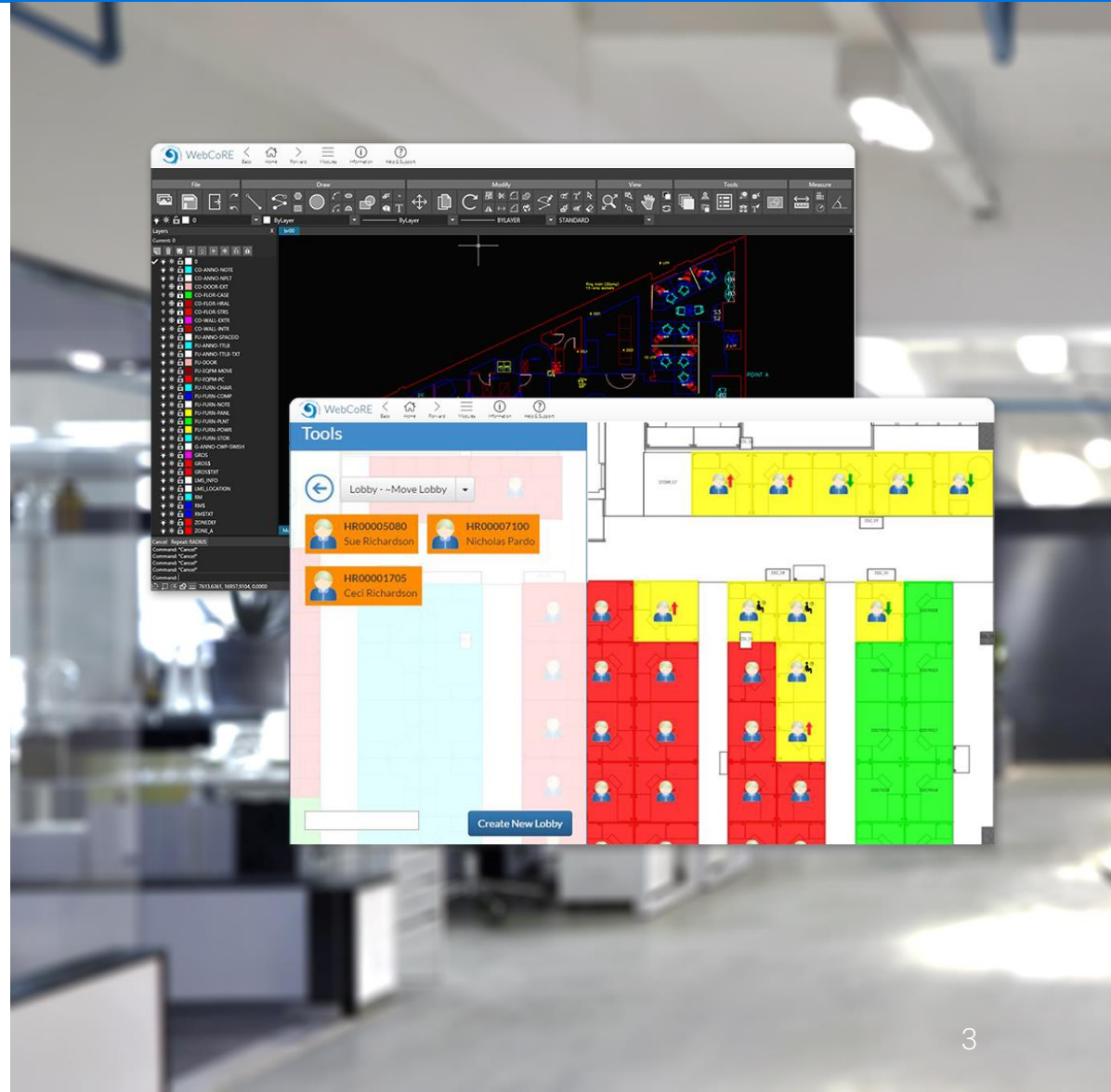


# WebCAD

WebCAD is an online, lightweight - demand CAD tool

WebCAD features a comprehensive set of drawing, editing and annotation tools enabling cost-effective drawing work to be completed in-house

Maintain a library of floor plans reflecting current lay out in the built environment



# Features

- A comprehensive set of 2D drawing, editing and annotation tools
- Integration with WebCoRE's floor plan database
- Gateway permissions/ floor plan checkout
- Online drawing storage for multiple projects and sharing
- Import/ export multiple file formats (DWG, PDF and images for reference)
- Ribbon-tab navigation
- User interface - work intuitively with common dialogue boxes and toolbars
- Helpdesk access and other rich training content



# Benefits

- Complete drawing changes or new drawings in-house and cost-effectively
- Maintain drawing library accurately reflecting the built environment layout
- A lightweight CAD solution
- Access drawings anywhere with online drawing storage – a full CAD experience with nothing to install
- Share designs and simultaneously collaborate with others
- Multiple users access same drawings through same platform eliminating compatibility issues
- Modern user interface meaning easy-to-use and fast load times



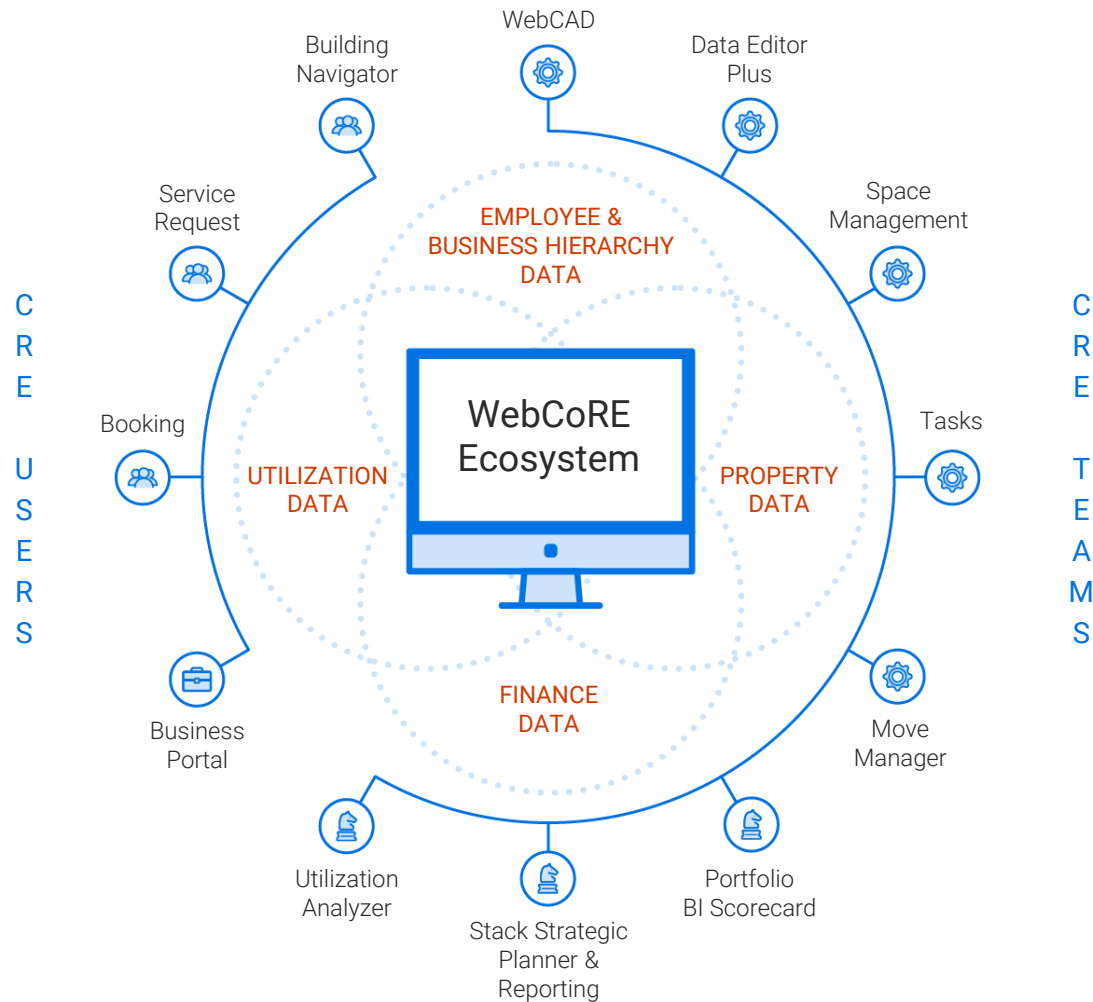
# How WebCAD Contributes to the Ecosystem

WebCoRE's Ecosystem creates a cross facility community and platform that increases communication, insight and data quality

The breadth and depth of insight and capabilities drives CRE design and management in-line with both user expectations and strategic directives

WebCAD provides teams the ability to edit and create floor plans accurately reflecting the current layout of the built environment

As floor plans are the basis for the data stack visualizing CRE portfolios, keeping accurate representation is crucial for both planning and management



# About The Changing Workplace

The Changing Workplace was founded in 2000 after developing our portfolio management platform, WebCoRE

WebCoRE's tools are used to capture and blend metrics outlining how facilities are being used compared to how they were planned

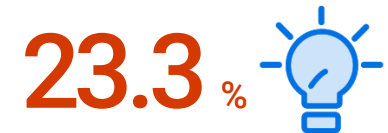
Data visibility and platform capabilities enable users to take affirmative action creating and enabling strategies aligning with expectations from users and governance

WebCoRE is used to manage over 200 million square feet with over 20k active users across 140 countries

Offices in America, Europe and partnerships in several strategic locations globally



Countries with WebCoRE presence



Turnover reinvested in R&D annually



Sq ft managed



Active WebCoRE users



Let us show you how easy accuracy is

[marketing@changingworkplace.com](mailto:marketing@changingworkplace.com)

[www.changingworkplace.com](http://www.changingworkplace.com)

+44 (0)1444 441 000