

The Changing Workplace

Move Manager

SIMPLIFY WORKPLACE MOVES & RELOCATIONS

Contents

What is Move Manager?

What Move Manager Does

Capabilities

Benefits

Features

Behavior

- Planning Moves
- Supporting Moves
- Analyzing Moves

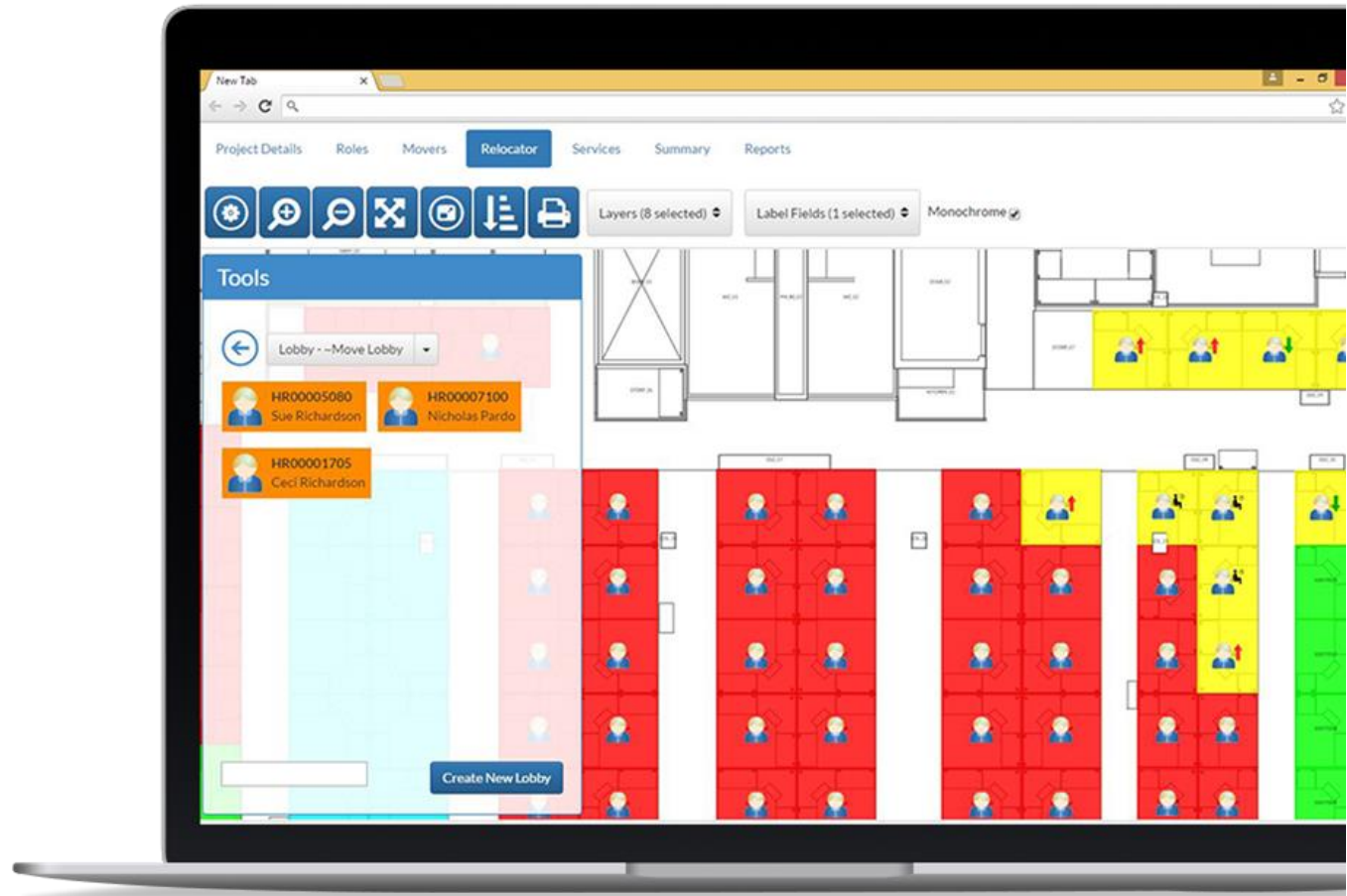
About The Changing Workplace



What is Move Manager?

Move Manager is an end-to-end tool that supports users to plan moves projects, pushes documents to all stakeholders and enables post-move analysis

The capabilities at each touch point creates the moves process that simplifies moves and reduces churn/friction when moving



What Move Manager does

Move Manager empowers you to move any size population any number of times, either in hypothetical scenarios or real life

Move Manager coordinates and communicates automatically with all move stakeholders, including third-party suppliers - streamlining the move process and keeping everyone current

The tool provides multiple reports for you to reflect on the success and usefulness of moves, optimizing your moves strategy

Move Manager Averages

PER CLIENT PER ANNUM

 **6 %**

REDUCTION IN CHURN

 **\$4.7_m**

COST REDUCTION (USD)



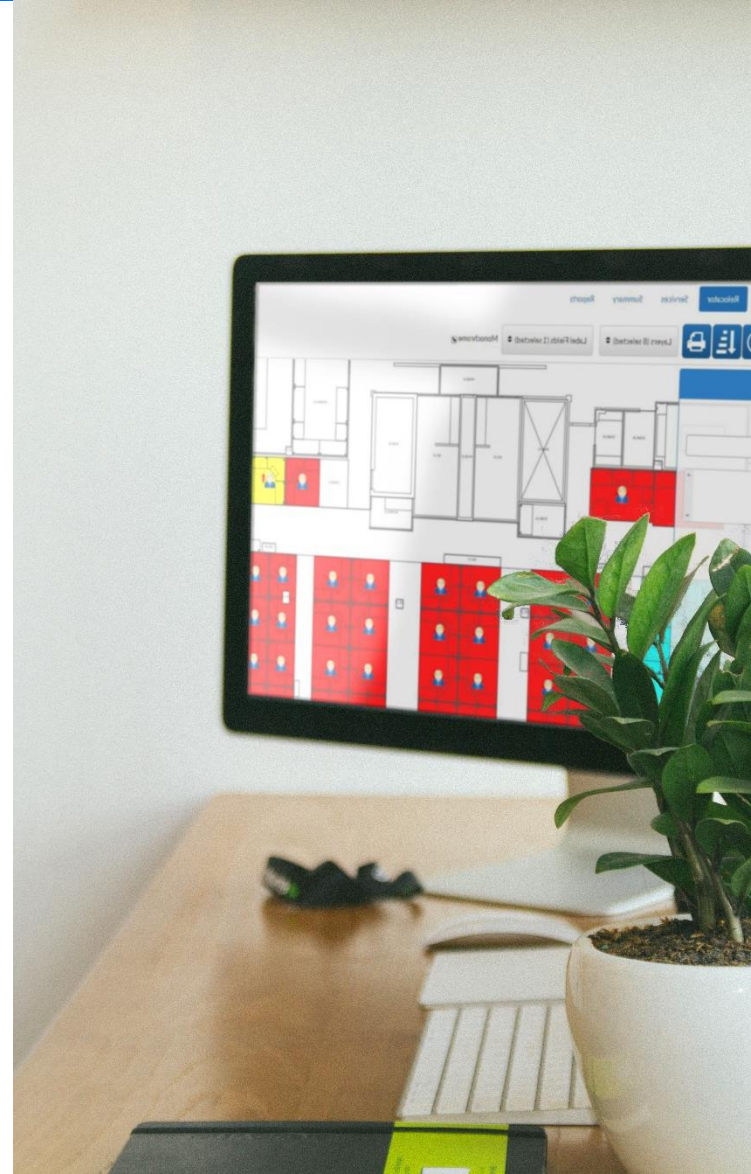
Benefits

- Plan and create move jobs of any size
- All-in-one move capabilities enabling planning, performing and analysis
- Single source-of-truth reduces conflict and mistakes amongst all stakeholders
- Automated communication at each step of a move project keeps all stakeholders current
- Automated processes guides you through the full move process maintaining forward movement and achieving set timelines
- Modern UI/UX is instantly familiar, making navigation and tool use simple
- Cost-effective solution



Features

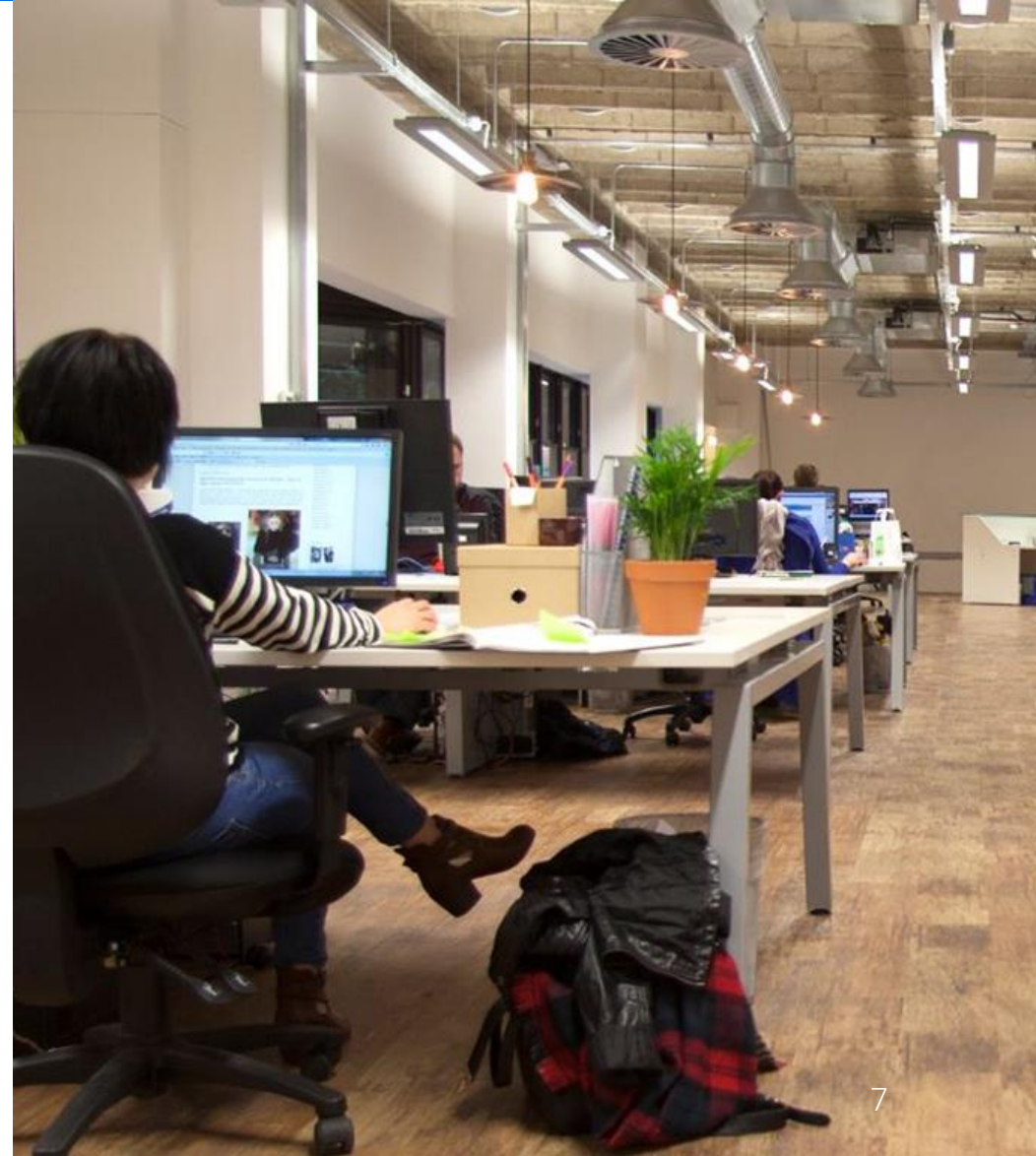
- Scenario planning
- Modern UI/UX
- Drag-and-drop moves functionality
- Multiple move planning methods
- Standardized Move Pack documentation
- Users can access and produce move reports displaying key metrics including churn statistics, total number of employees moved and total moves-related costs
- Access general move reports or a specific move related report
- Service list creation for any project which can be incorporated into cost-planning
- Integration with client and third party systems
- Wider communication and integration capabilities enabling automated service lists and purchase order dispatch



Behavior

Planning Moves

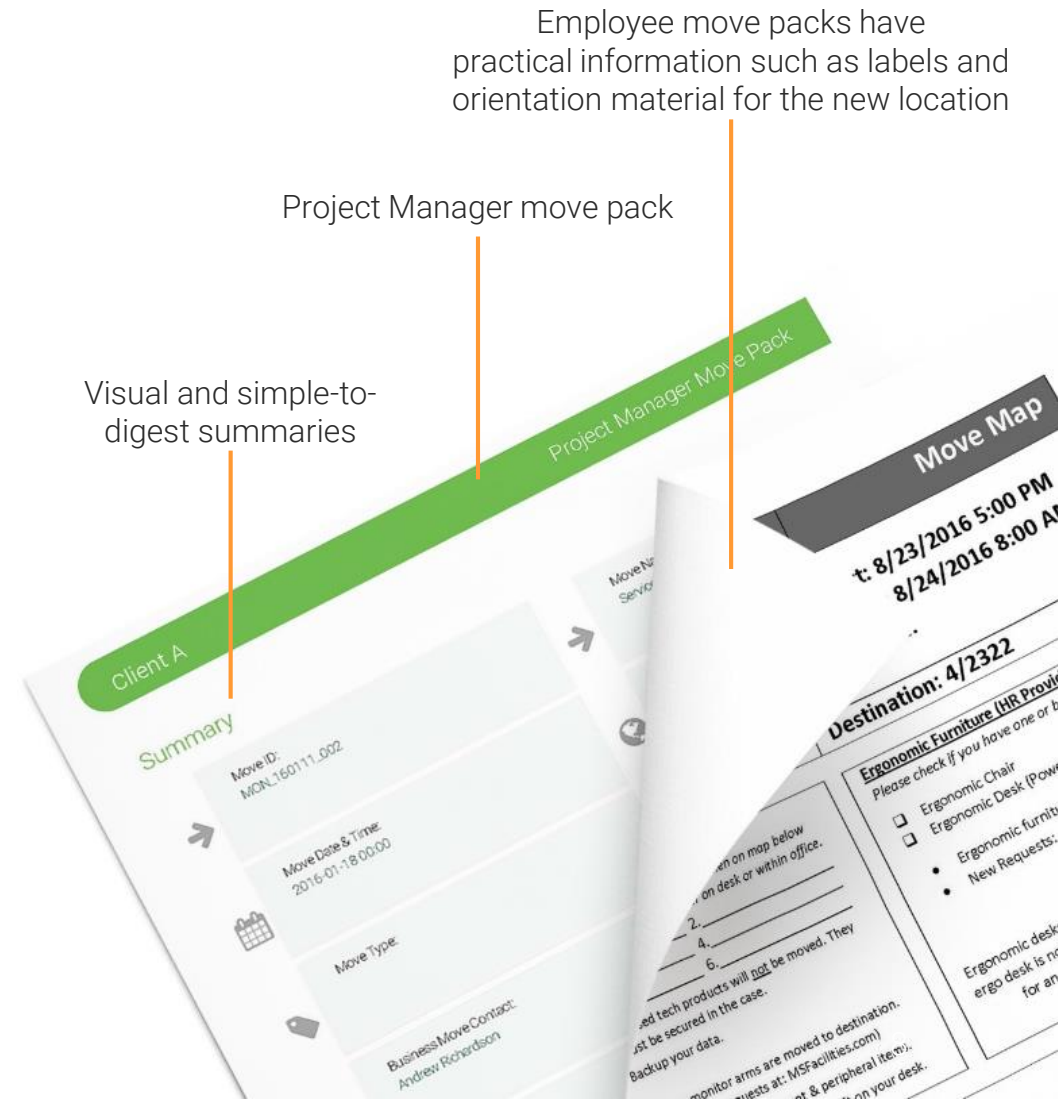
- Populate a moves plan, moving employees and assets
- Coordinate and schedule move projects of any size
- Create multiple moves scenarios
- House employees moving to an unknown location in a digital lobby
- Communicate plans and scenarios with decision makers and influencers
- Identify structural/ floorplan changes required due to a move



Behavior

Supporting Moves

- Move Manager supports the moves process
- Automated communication and distribution of key moves material, such as:
 - Moves packs for both project managers and employees
 - detailed instructions for third party stakeholders
 - Purchase orders, etc...
- Create configurable service lists which can be added to any project and incorporated into cost planning
- Assign service requests to specific employees involved in a move or across the whole move



Behavior

Analyzing Moves

- Extensive data capture categories
- Access moves data to compare historical and cross-site moves
- Multiple report types as standard are available to probe (i.e. like-for-like historical analysis, cross-site comparisons, cross-business unit comparisons)
- New reports can be customized at the user level
- With integrated feeds overlay additional information & examine the impact of moves (i.e. if attrition rates spike following a move)
- Communicate analysis results within the module or export outputs as visual graphs or in data format

Run **multiple & configurable** reports to answer any questions you may have

The screenshot displays the 'Move Manager' interface within the 'WebCoRE' application. The top navigation bar includes 'Move Manager', 'Projects', and 'Reports'. The 'Reports' section is active, showing two report options: 'Move Schedule Calendar' (with an 'Export to PDF' button) and 'Project List Report' (with an 'Export to Excel' button). Below this, a 'Create Move Schedule Calendar' form is shown, prompting the user to select a date range. The form includes dropdowns for 'Start Month/Year' (set to January 2019) and 'End Month/Year' (set to January 2019), with a 'Create Report' button at the bottom.

About The Changing Workplace

The Changing Workplace was founded in 2000 after developing our portfolio management platform, WebCoRE

WebCoRE's tools are used to capture and blend metrics outlining how facilities are being used compared to how they were planned

Data visibility and platform capabilities enable users to take affirmative action creating and enabling strategies aligning with expectations from users and governance

WebCoRE is used to manage over 200 million square feet with over 20k active users across 140 countries

Offices in America, Europe and partnerships in several strategic locations globally



£7.8_b

of unused space consolidated
over 20 years



200_m

Sq ft managed



140

Countries with WebCoRE
presence



23.3 %

Turnover reinvested in R&D
annually



20_k

Active WebCoRE
users



Let us show you how easy accuracy is

marketing@changingworkplace.com

www.changingworkplace.com

+44 (0)1444 441 000