

The Changing Workplace



Building Navigator

NAVIGATE FACILITIES AND LOCATE PEOPLE

Contents

Building Navigator

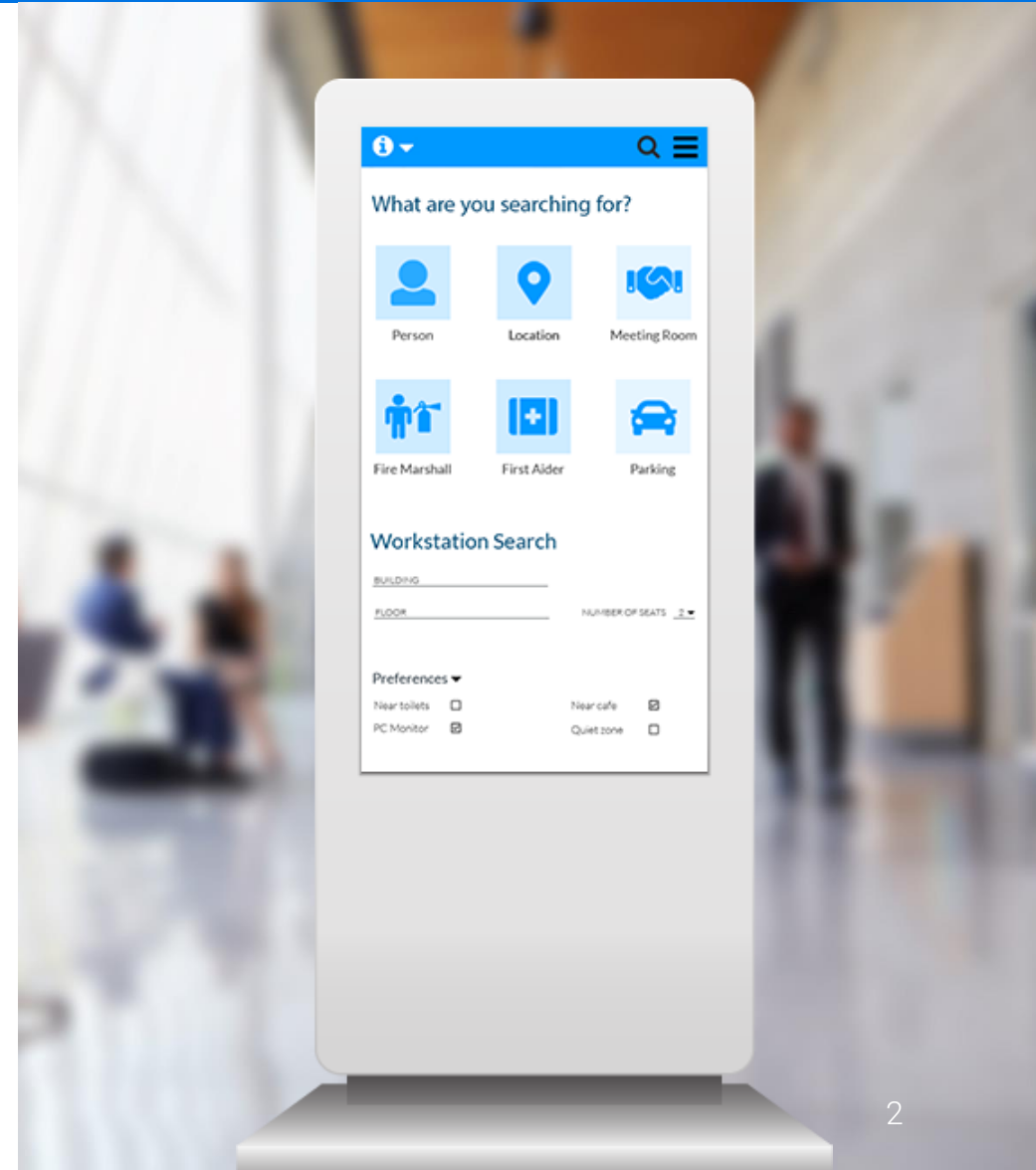
- Setup

Features & Benefits

Functionality

- People, Space and Assets Locator
- Wayfinding

About The Changing Workplace



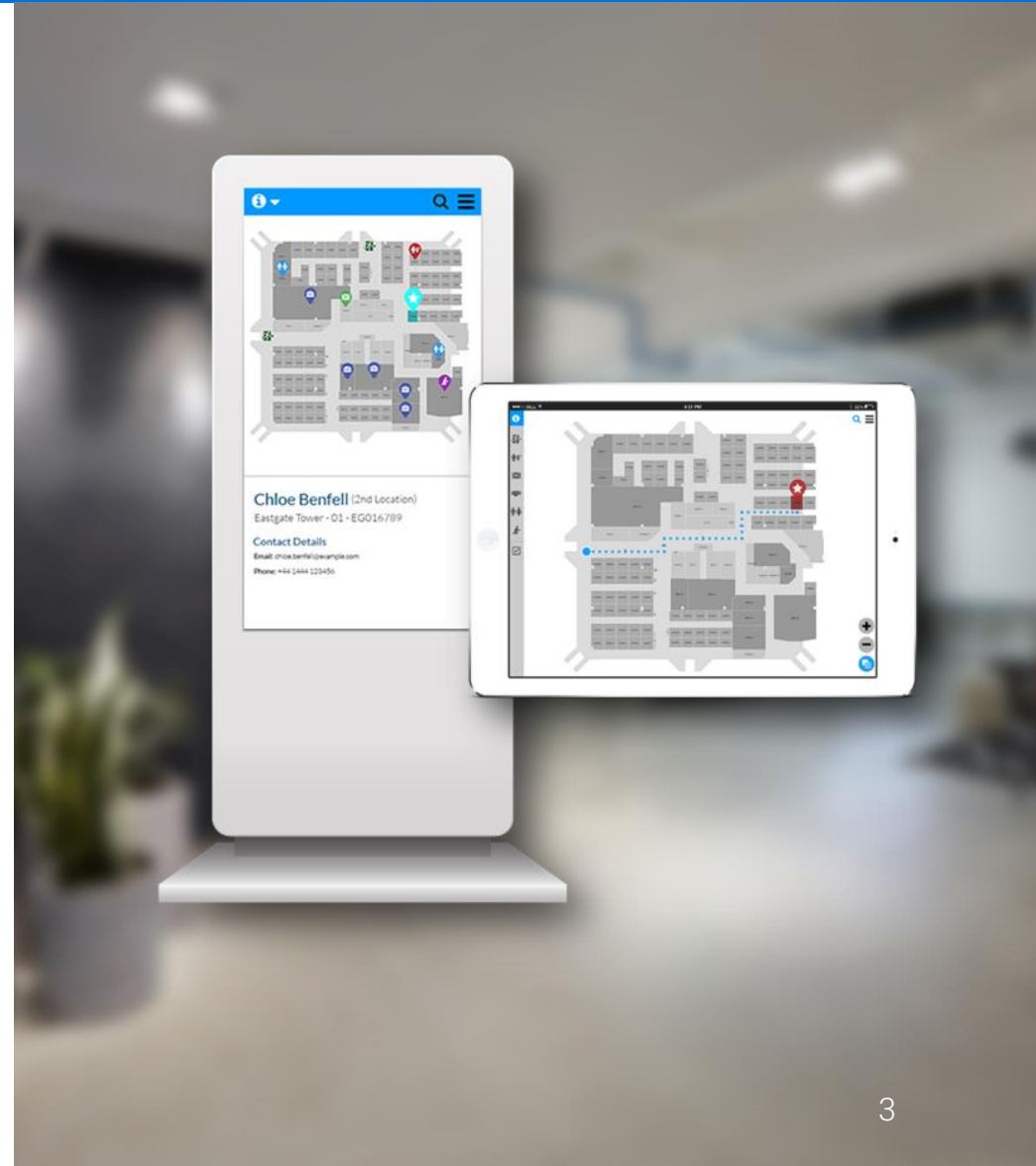
Building Navigator

Building Navigator simplifies navigating buildings for employees and visitors

The search functionality allows users to locate the spaces, people and assets they need through desktop, mobile or kiosk devices

There are multiple bolt-on/ integration capabilities:

- Book space near a search result (either through The Changing Workplace's bolt-on Booking app or by integrating with an existing booking app)
- Visitor Management - Guests can check-in at a central kiosk which notifies the person they are visiting they have arrived



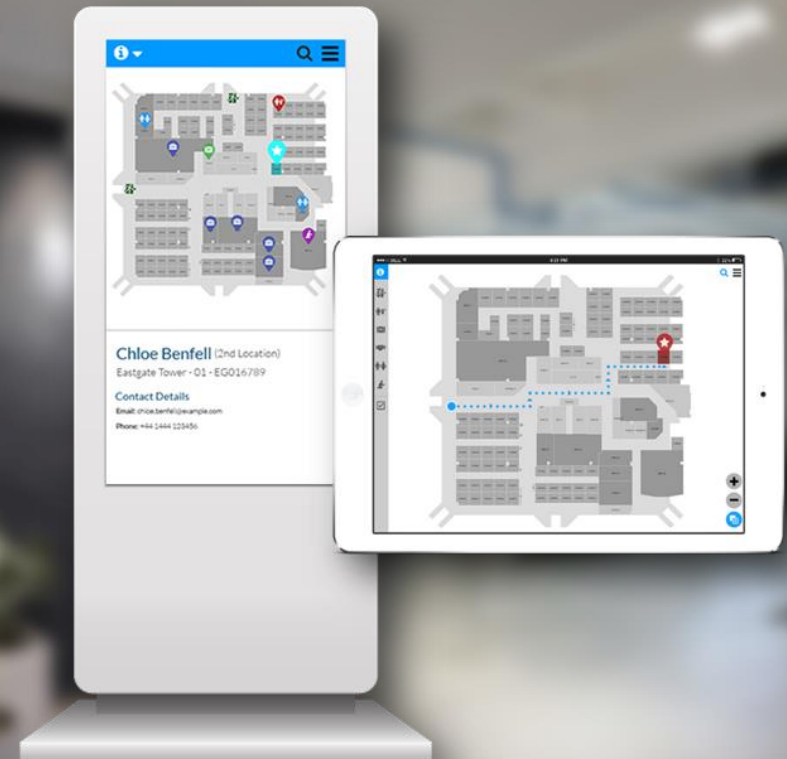
Building Navigator - Setup

If you're a current WebCoRE user, setting up Building Navigator is as simple as turning the module on and light configuration and floor plan prep

If new to WebCoRE, Building Navigator setup is still easy. We'll just have to configure your floorplans – first auditing for standardization and bringing cross-portfolio floorplan quality in-line

Our team will advise you on recommended kiosk devices to ensure visual attractiveness and app usability is at its best

When floorplan, employee and asset data layers are updated at source, those changes are automatically updated in 2D and 3D floorplans taking away the pain of having to update first in 2D and then in 3D



Features & Benefits

- Simple and advanced search functionality to locate personnel, assets and spaces
- Accessible design features
- For ease of use and consistency, Building Navigator features multi-device deployment (desktop, mobile and kiosk)
- Breadcrumb wayfinding to easily move from point A to B in the built-environment
- Links into company phone book to contact personnel
- Integration available with existing space booking tools
- Both 2D and 3D floor plans are loaded into the app, giving users a choice on how they view a floor plan



Floor Views & Capabilities

View fully interactive 2D or 3D floor plans – users can choose the view they find easiest to use when interacting with the app



Floor plans are zoomable and rotate to show details



View agile neighborhoods and zones to understand what space is booked and what's available

Incorporate sensor data enabling heat maps – outlining useful trending information for building users and planners

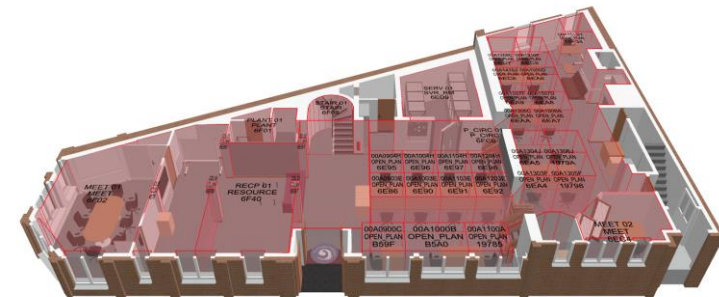
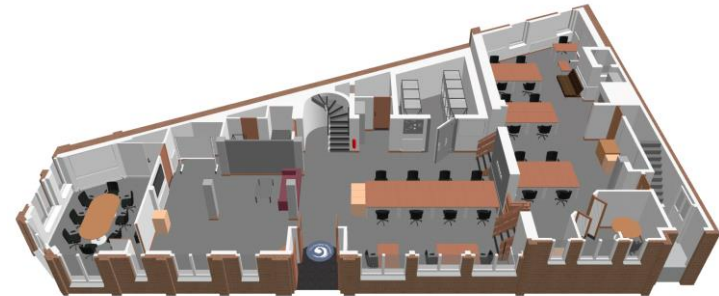


Floor Views & Capabilities

3D floor plans provide greater visibility and detail on floor plans reflecting landmarks and unique identifiers providing greater detail for users

Incorporate branding and unique elements to accurately reflect the look and feel of the built environment

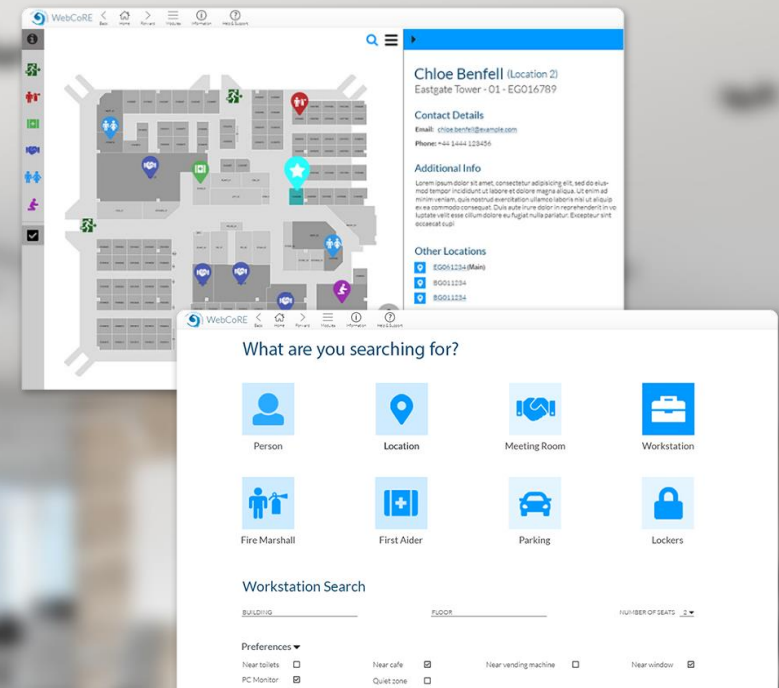
Users can turn multiple layers on to better understand space distribution enabling users to identify common space, meeting rooms and where employees are located



Functionality – People, Space and Assets Locator

Use the Building Navigator tool to understand where personnel, spaces & assets are

- Search for personnel's current location on floor plan and access relevant information (contact details, availability and link to skype, yammer, etc...)
- Search space (parking, workstations, meeting rooms)
- Use advanced filters for specific search preferences (i.e. distance to toilets, cafes, vending machines, windows etc...)
- View free spaces and book
- Search for assets and view locations on a floor plan
- Building Navigator taps into HR feeds and space booking data to make finding personnel at fixed workstations or agile easy
- Supports multiple desk locations (i.e. personnel with more than 1 assigned space)
- Search for fire-marshalls, first-aiders, security staff, etc...

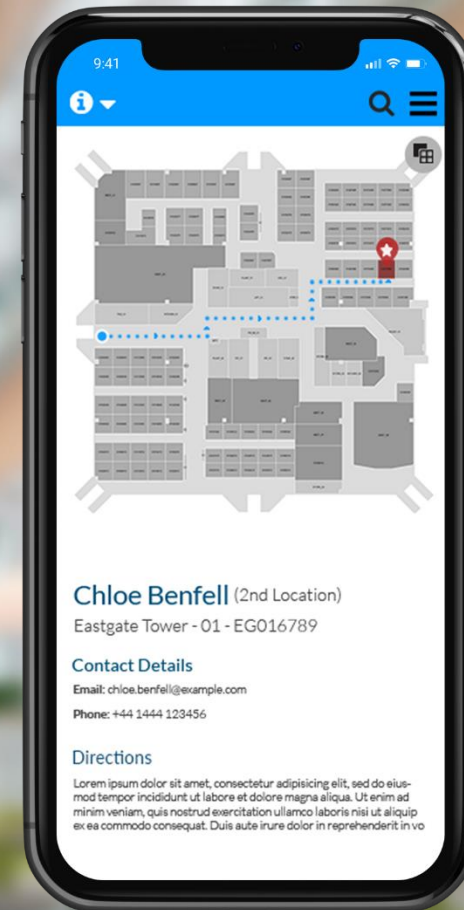


Functionality - Wayfinding

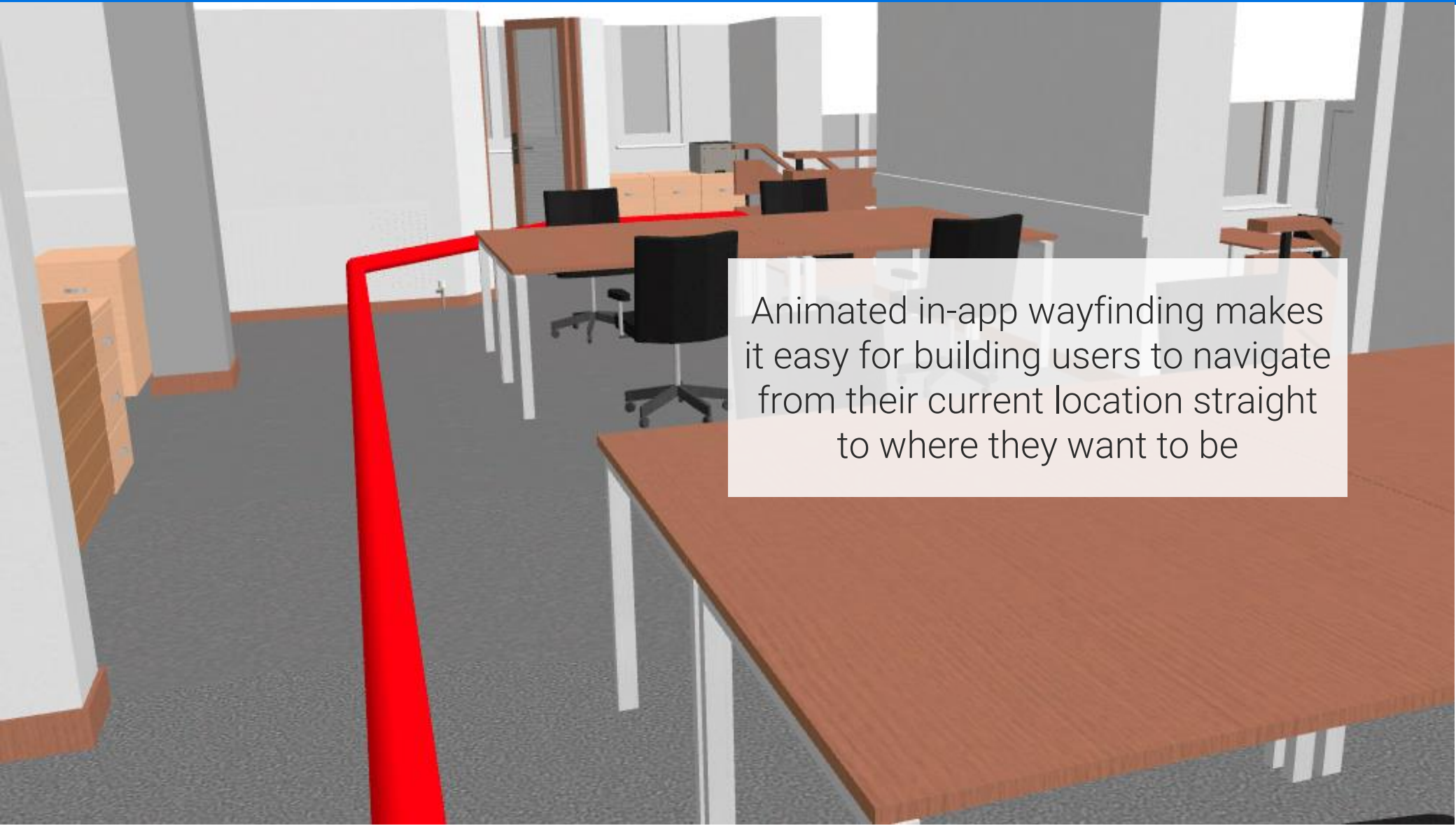
If new to a site or booking an unfamiliar space or asset users can access in-app real-time directions to bring them unerringly to their location

Bread crumb visibility outlines how to move from current location to the desired location

Easily find meeting rooms, colleagues and reserved space saving time and reducing lateness



Functionality - Wayfinding



Animated in-app wayfinding makes it easy for building users to navigate from their current location straight to where they want to be

About The Changing Workplace

The Changing Workplace was founded in 2000 after developing our portfolio management platform, WebCoRE

WebCoRE's tools are used to capture and blend metrics outlining how facilities are being used compared to how they were planned

Data visibility and platform capabilities enable users to take affirmative action creating and enabling strategies aligning with expectations from users and governance

WebCoRE is used to manage over 200 million square feet with over 20k active users across 140 countries

Offices in America, Europe and partnerships in several strategic locations globally



£7.8_b

of unused space consolidated
over 20 years



200_m

Sq ft managed



140

Countries with WebCoRE
presence



23.3 %

Turnover reinvested in R&D
annually



20_k

Active WebCoRE
users



Let us show you how easy accuracy is

marketing@changingworkplace.com

www.changingworkplace.com

+44 (0)1444 441 000